


# Proposed RRFB Locations

City of Menomonie, Dunn County, Wisconsin

WisDOT TAP Application

## Overview Map

 Proposed RRFB Location

### Location A

- 21st Street Crosswalk (2)
- Mid Block Service Road Crosswalk (2)

### Location B


- Mid Block 21st Street East Crosswalk (2)


### Location C

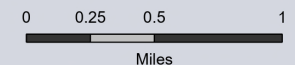
- 24th Avenue and South Broadway/STH 25 Crosswalk (4)

### Location D

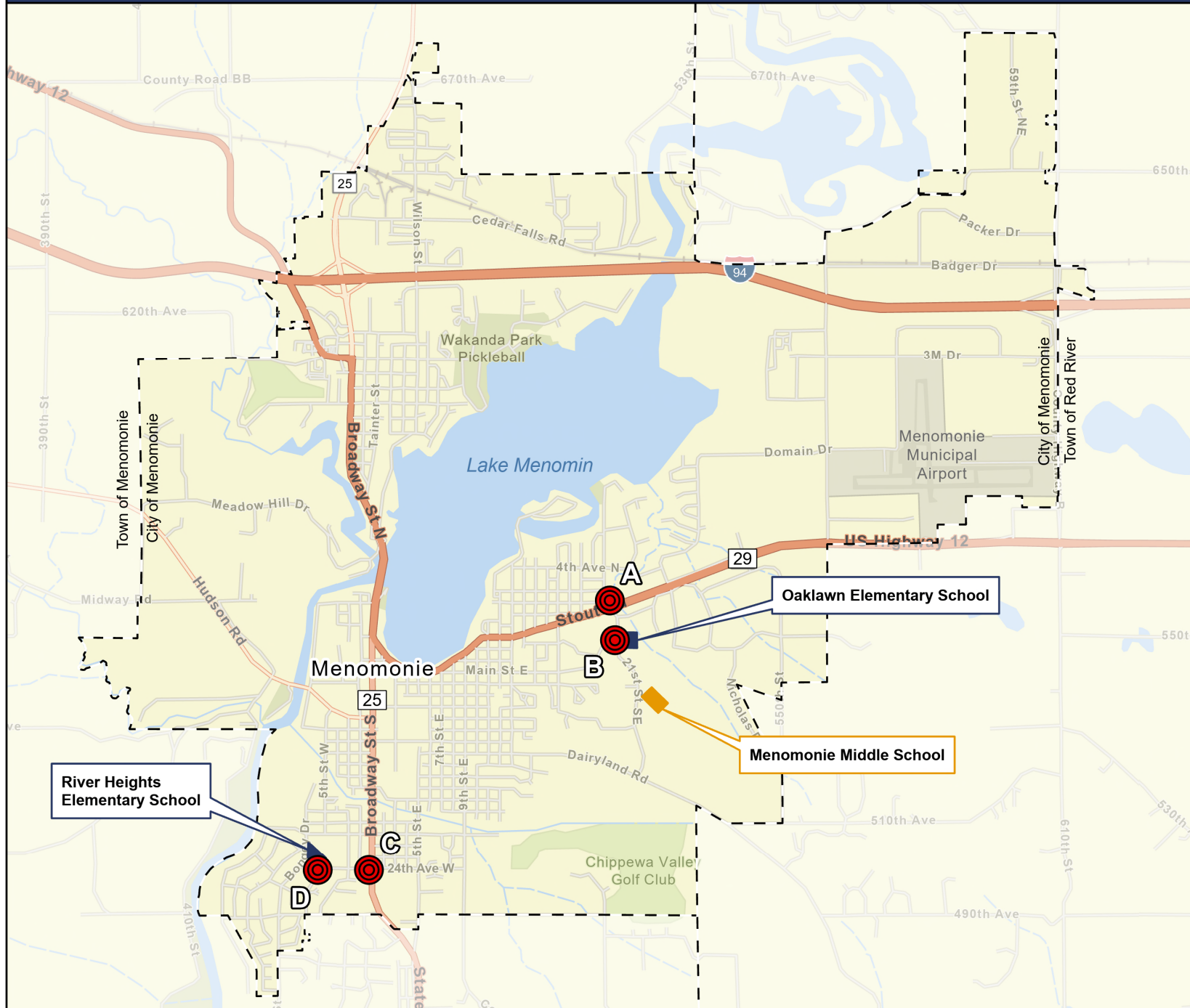
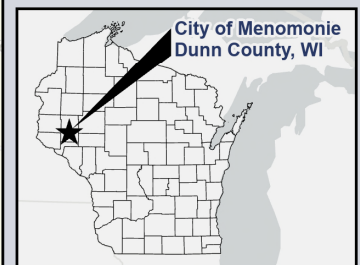
- Mid Block 24th Avenue West Crosswalk (2)

 Elementary School Location

 Middle School Location



Map Date: October 22, 2025





# Proposed RRFB Locations

City of Menomonie, Dunn County, Wisconsin

WisDOT TAP Application



## Location A

● Proposed RRFB Location

### Additional Proposed Changes

▨ Crosswalk to be Removed

▨ Sidewalk to be Removed

▨ Crosswalk to be Added

▨ Sidewalk to be Added

### Crash Occurrence\* Injury Severity

■ (K) Fatality

■ (A) Suspected Serious Injury

■ (B) Suspected Minor Injury

■ (C) Possible Injury

■ (O) No Apparent Injury

□ Property Damage

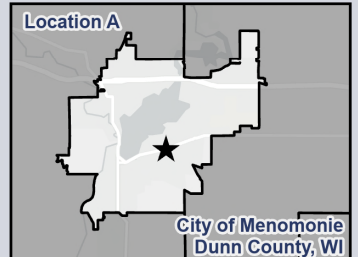
■ Bicycle/Pedestrian Related

\*Crash Source: WisDOT, 2025. Crashes were taken from Jan 2025 - Sept 2025.



0 15 30 60  
Feet

Map Date: October 22, 2025

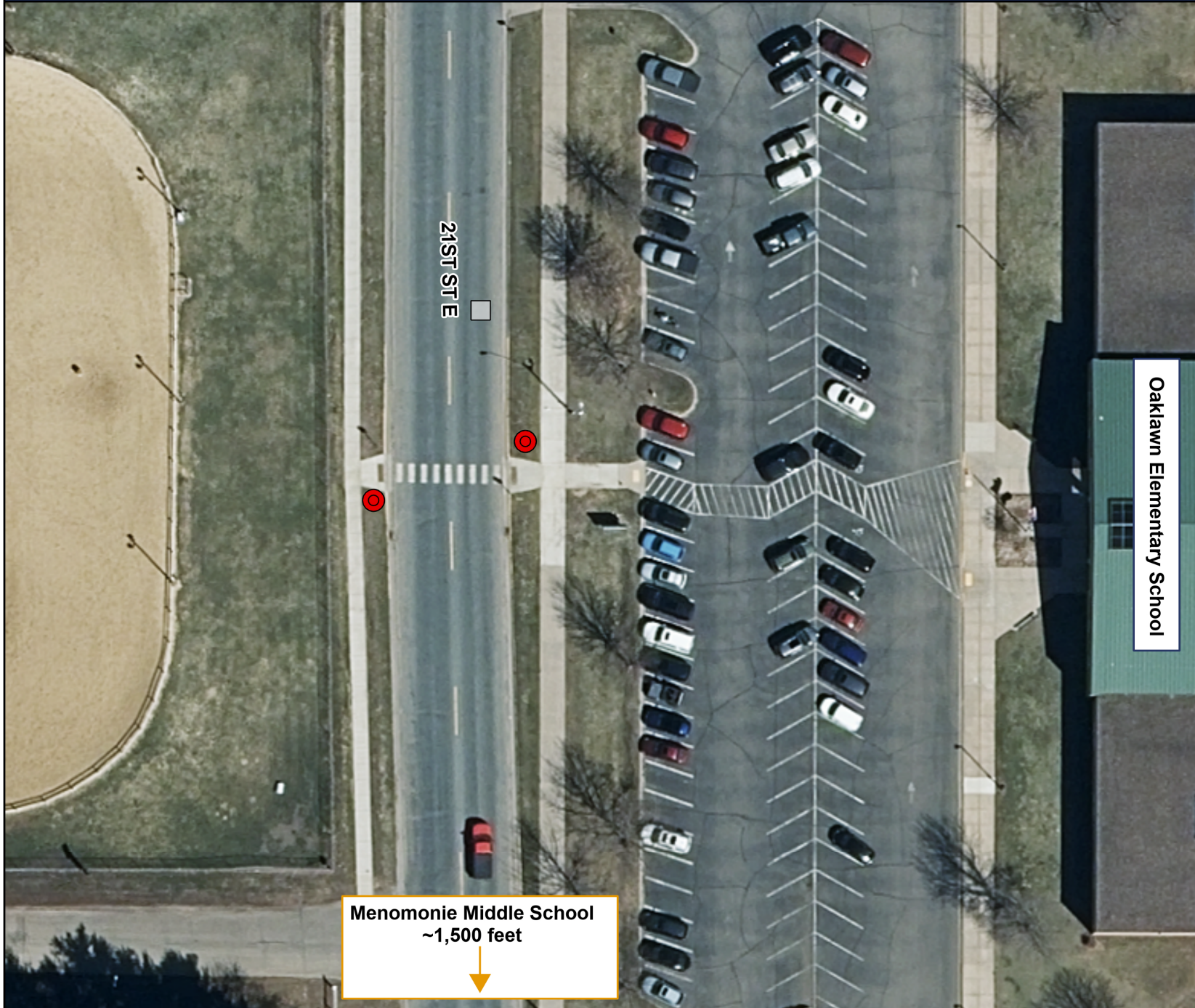




# Proposed RRFB Locations

City of Menomonie, Dunn County, Wisconsin

WisDOT TAP Application



## Location B

● Proposed RRFB Location

### Crash Occurrence\* Injury Severity

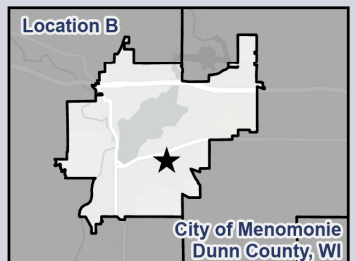
- (K) Fatality
- (A) Suspected Serious Injury
- (B) Suspected Minor Injury
- (C) Possible Injury
- (O) No Apparent Injury
- Property Damage
- Bicycle/Pedestrian Related

\*Crash Source: WisDOT, 2025. Crashes were taken from Jan 2025 - Sept 2025.



0 15 30 60  
Feet

Map Date: October 23, 2025

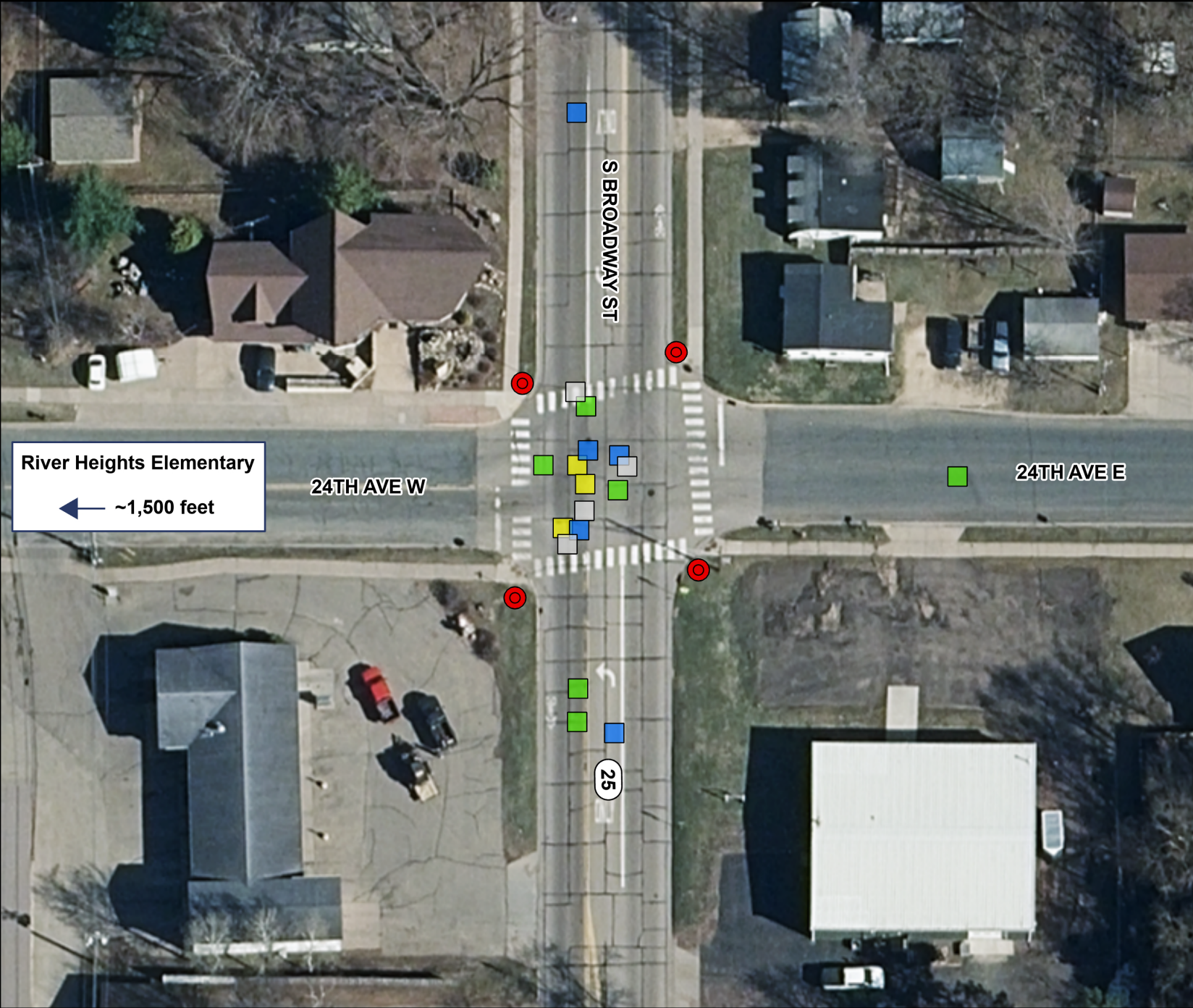




# Proposed RRFB Locations

City of Menomonie, Dunn County, Wisconsin

WisDOT TAP Application



## Location C

Proposed RRFB Location

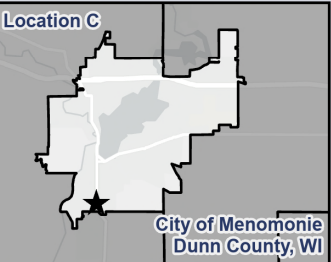
### Crash Occurrence\* Injury Severity

- (K) Fatality
- (A) Suspected Serious Injury
- (B) Suspected Minor Injury
- (C) Possible Injury
- (O) No Apparent Injury
- Property Damage
- Bicycle/Pedestrian Related

\*Crash Source: WisDOT, 2025. Crashes were taken from Jan 2025 - Sept 2025.



Map Date: October 23, 2025





# Proposed RRFB Locations

City of Menomonie, Dunn County, Wisconsin

WisDOT TAP Application



## Location D

Proposed RRFB Location

### Crash Occurrence\* Injury Severity

- (K) Fatality
- (A) Suspected Serious Injury
- (B) Suspected Minor Injury
- (C) Possible Injury
- (O) No Apparent Injury
- Property Damage
- Bicycle/Pedestrian Related

\*Crash Source: WisDOT, 2025. Crashes were taken from Jan 2025 - Sept 2025.



0 15 30 60  
Feet

Map Date: October 23, 2025

