

## Big Picture

- 2023 represents the third state level assessment given since the statewide shutdown to in person instruction during the spring of 2020 due to COVID-19. The data included in this document are one year of pre, and three years of post pandemic assessment results.
  - State level assessments provide a common measure of achievement across the State of Wisconsin and between schools and districts.
  - Wisconsin Forward Exam: Grades 3-8, 10; measures performance in English Language Arts (ELA), Math, Science and Social Studies
    - Grades 3-8; measures performance in ELA and Mathematics
    - Grades 4 and 8; measures performance in Science
    - Grades 4, 8, and 10; measures performance in Social Studies
  - ACT: Grade 11; measures performance in ELA (English, Reading, and Writing), Mathematics, and Science (same college admissions exam taken by students nationwide)
  - PreACT Secure: Grades 9 and 10; measures performance in ELA (English, Reading, and Writing), Mathematics, and Science and is predictive of ACT performance
  - Dynamic Learning Maps (DLM): alternate assessment for students with intellectual disabilities
    - Grades 3-11; measures performance in ELA and Mathematics
    - Grades 4 and 8-11; measures performance in Science
    - Grades 4, 8, and 10; measures performance in Social Studies
- 

## State Data Picture

- In general, the State of Wisconsin saw an overall increase in both proficiency and test participation levels on the Spring of 2023 state assessments when compared to that of Spring of 2021 and 2022. While an overall increase in proficiency levels has been observed at the state level, it is not yet at that of pre-pandemic levels.

## SDMA Data Picture

- For all grades combined, the SDMA saw higher overall levels of proficiency in ELA, Math, and Science and matched that of the state in the area of Social Studies, on the Spring 2023 WI State Forward Assessment.
  - Overall proficiency levels within the SDMA are up when comparing SDMA state assessment data from the Spring of 2023 in ELA, Math, Science and Social Studies to that of the Spring 2019 WI State Forward Assessment. 2019 was the last state assessment taken prior to the statewide shut down in the spring of 2020.
  - The overall increase in ACT composite score for students in the SDMA, while below that of the state, matches the observed increase at the state level for the Spring of 2023 when compared to the Spring of 2022.
- 

## Abbreviations Guide

- ELA - English Language Arts
- SDMA - School District of the Menomonie Area
- SWD - Students With a Disability
- ECD - Economically Disadvantaged
- EL - English Learner



## SDMA State Assessment Overview

### SDMA Forward Data

Forward (ELA)

SDMA - Above state ELA all grades combined (3-8). Two years of Improved growth, now above pre-pandemic levels.

SDMA - Above state ELA all grades combined (3-5). Two years of Improved growth, now above pre-pandemic levels.

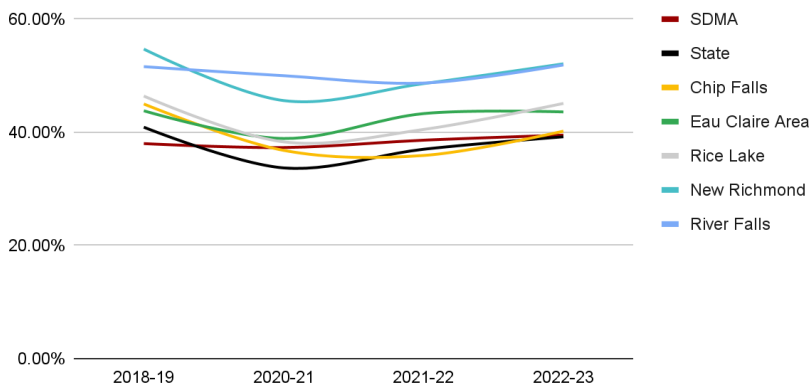
SDMA - Below state ELA all grades combined (6-8). Three years of decrease in overall proficiency levels.

SWD - Proficiency increase over past three years on the ELA assessment, exceeding pre-pandemic levels.

ECD - Proficiency increase since last ELA assessment, exceeding pre-pandemic levels.

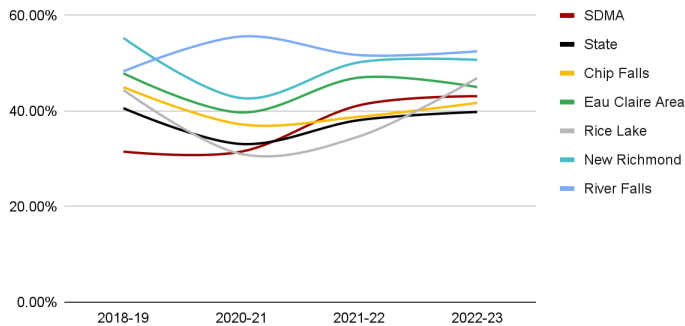
EL - Proficiency decrease since last ELA assessment, not yet to pre-pandemic levels.

ELA Grades 3-8 Percent Proficient



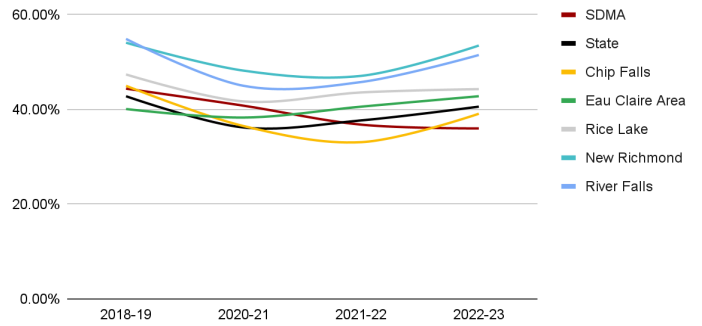
ELA Grades 3-8 Percent Proficient

ELA Grades 3-5 Percent Proficient



ELA Grades 3-5 Percent Proficient

ELA Grades 6-8 Percent Proficient



ELA Grades 6-8 Percent Proficient

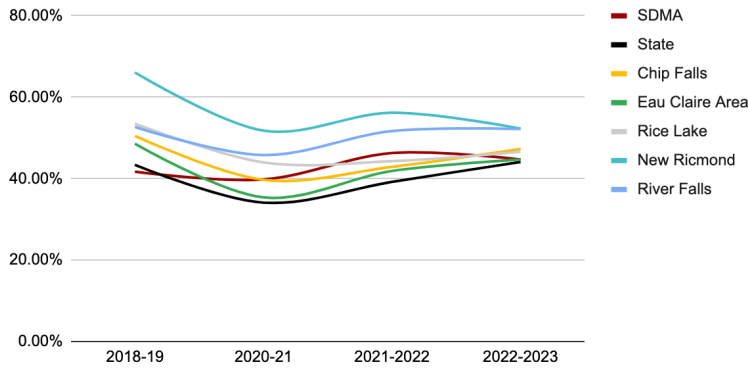


## SDMA State Assessment Overview

### Forward (Math) WI Forward

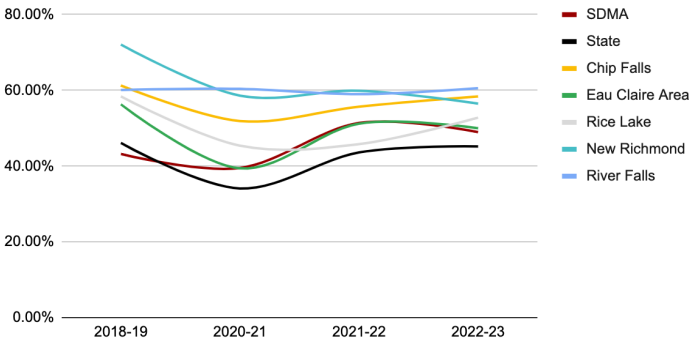
- SDMA - Above state Math all grades combined (3-8). Two years above pre-pandemic levels.
- SDMA - Above state Math all grades combined (3-5). Three years above pre-pandemic levels.
- SDMA - Above state Math all grades combined (6-8). Three years above pre-pandemic levels.
- SWD - Proficiency decrease since last Math assessment, exceeding pre-pandemic levels.
- ECD - Proficiency levels similar to last Math assessment, exceeding pre-pandemic levels.
- EL - Increase in proficiency levels since last Math assessment, not yet to pre-pandemic levels.

Math Grades 3-8 Percent Proficient



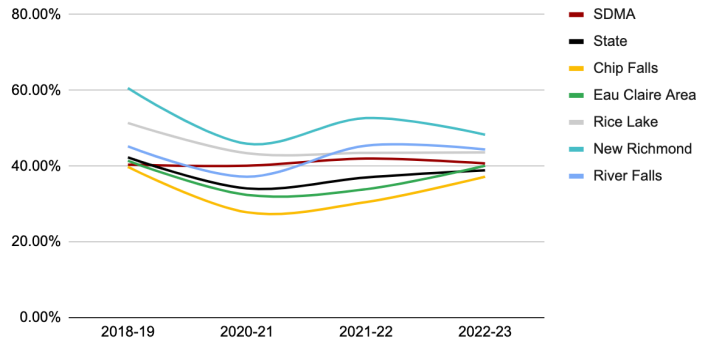
Math Grades 3-8 Percent Proficient

Math Grades 3-5 Percent Proficient



Math Grades 3-5 Percent Proficient

Math Grades 6-8 Percent Proficient



Math Grades 6-8 Percent Proficient



## SDMA State Assessment Overview

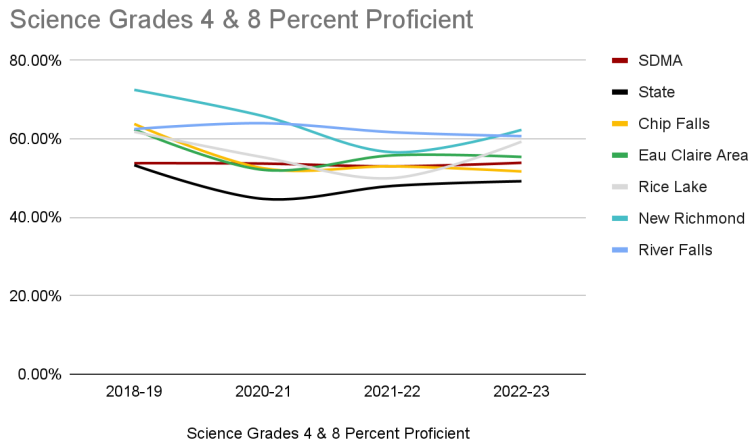
### Forward (Science)

SDMA - Above state Science all grades combined (4 & 8). Two years of improved growth, above pre-pandemic levels.

SWD - Increase in proficiency levels since last Science assessment, not currently at pre-pandemic levels.

ECD - Increase in proficiency levels since last Science assessment, exceeding pre-pandemic levels.

EL - Increase in proficiency levels since last Science assessment, not currently at pre-pandemic levels.



### Forward (Social Studies)

SDMA - Matches the state Social Studies all grades combined grades (4, 8, and 10).

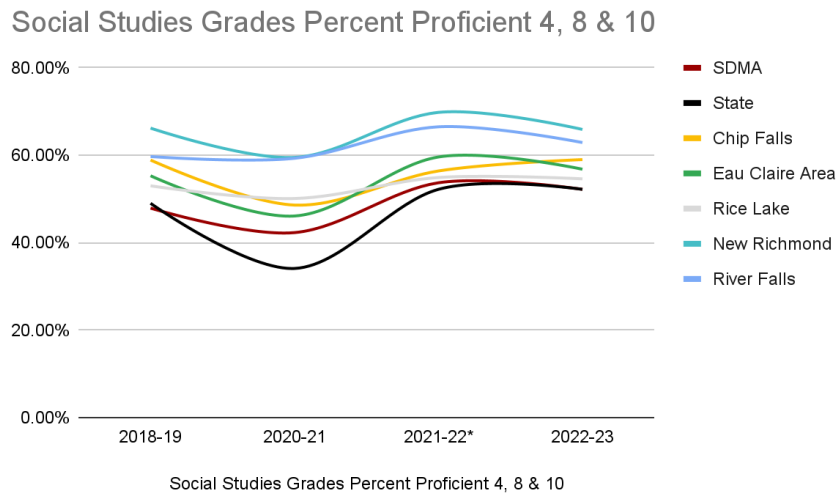
SDMA - Above state Social Studies combined grades (4 and 8).

SDMA - Below state Social Studies grade (10).

SWD - Increase in proficiency levels since last Social Studies assessment.

ECD - Increase in proficiency levels since last Social Studies assessment.

EL - Increase in proficiency levels since last Social Studies assessment.





## SDMA State Assessment Overview

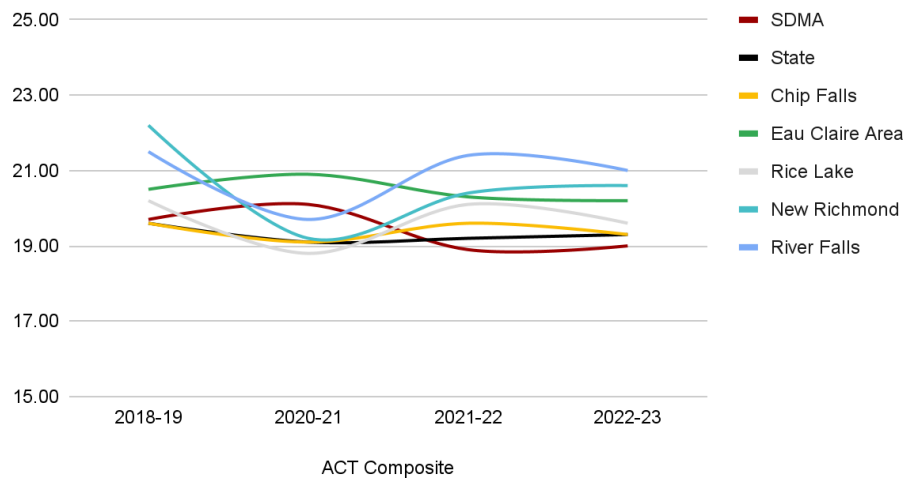
### PreACT Secure (Grades 9 & 10)

- This is the first year for the PreACT Secure in the State of Wisconsin.
- Combined 9th & 10th ELA proficiency is above the state comparison.
  - 9th ELA above the state average.
  - 10th ELA above the state average.
- Combined 9th & 10th Math proficiency is above the state comparison.
  - 9th Math above the state average.
  - 10th Math above the state average.

### ACT (Composite: Grade 11)

- 2023 represents the second consecutive year that the SDMA overall ACT composite score has been below that of the state level.
- The increase in overall ACT composite score for 2023 in the SDMA matches the increase observed at the state level for 2023.
- Within the region, the SDMA and New Richmond observed increases in overall composite scores while Chippewa Falls, Eau Claire, Rice Lake, and River Falls observed decreases.
- SWD - Overall proficiency has remained stable in ELA, Math and Science.
- ECD - Overall proficiency has remained stable in ELA, Math and Science over the past two years.
- EL - (Sample size not large enough to report trend data publicly).

ACT Composite





## SDMA State Assessment Overview

### Work being done in the SDMA

- Review of ACT College and Career Readiness Standards by Department at MHS.
- High School Departments aligning in class assessment tasks with ACT level questions.
- Recommendations from ELA and Math Program Reviews are being implemented.
- Addition of ELA and Math interventionist positions at High School level.
- Year two Math and ELA Interventionists positions at the High School level.
- Professional development for 4K teachers in early literacy (phonics) instruction.
- Year one implementation of new ELA resources in grades K-2.
- Year two implementation of new ELA resources in grades 3-5.
- Year two implementation of new ELA resources in grades 6-8.
- Participation in phase three WI Math State standards roll out.
- Special Education IDEA Improvement Plan implementation in place following IDEA LEA Needs Assistance Identification.
- District-wide Multi Level Systems of Support (MLSS) team meetings throughout the year in support of MLSS programming within the SDMA to support all students.
- Development and implementation of continuous improvement plans (Building SLOs and Action Plans).