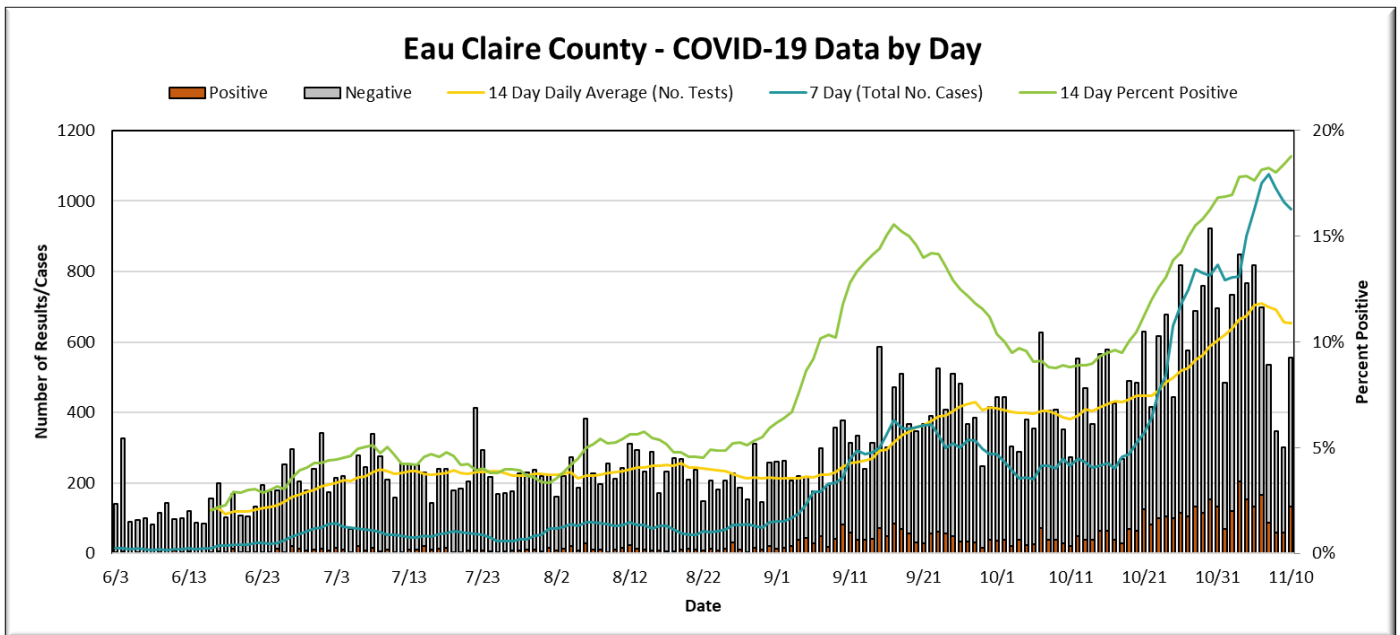


COVID-19 State and Local Case Summary

Data as reported to DHS by 9:00 PM on 11/10/2020						
<i>*unless otherwise noted, change calculated from previous week (may include jurisdiction corrections)</i>						
County/State	Total Cases	Change from Previous Day	Change from Previous Week	14 Day Cumulative Positivity Rate [^]	Cases per 100k People	Deaths
Eau Claire	5,292	+69 (+1.3%)	+976 (+22.6%)	19.7% (+1.1)	5,143.2 (+948.6)	34 (+6/+21.4%)
Buffalo	488	+22 (+4.7%)	+115 (+30.8%)	18.0% (+1.5)	3,612.4 (+851.3)	3 (No Change)
Chippewa	3,086	+102 (+3.4%)	+826 (+36.5%)	16.9% (-0.4)	4,805.4 (+1,286.2)	33 (+9/+37.5%)
Clark	1,439	+74 (+5.4%)	+332 (+30.0%)	18.4% (+3.1)	4,142.1 (+955.7)	23 (+4/+21.1%)
Dunn	1,735	+74 (+4.5%)	+359 (+26.1%)	20.0% (+1.9)	3,874.8 (+801.8)	1 (No Change)
Jackson	972	+41 (+4.4%)	+252 (+35.0%)	20.7% (+4.7)	4,708.4 (+1,220.7)	2 (No Change)
Pepin	289	+20 (+7.4%)	+89 (+44.5%)	24.7% (+6.6)	3,932.5 (+1,211.0)	1 (+1)
Trempealeau	1,514	+73 (+5.1%)	+278 (+22.5%)	19.2% (+4.2)	5,161.6 (+947.8)	7 (+2/+40.0%)
Wisconsin	285,891	+7,048 (+2.53%)	+41,889 (+17.17%)	17.9% (+2.1)	4,945.3 (+724.6)	2,457 (+301/+13.96%)

[^]This rate is calculated 'by test'. This means that if one person is tested multiple times, each of those test results are counted in the denominator of total tests.



Additional Data: [EC County](#) [WI County-Level](#) [Wisconsin](#) [U.S.](#)

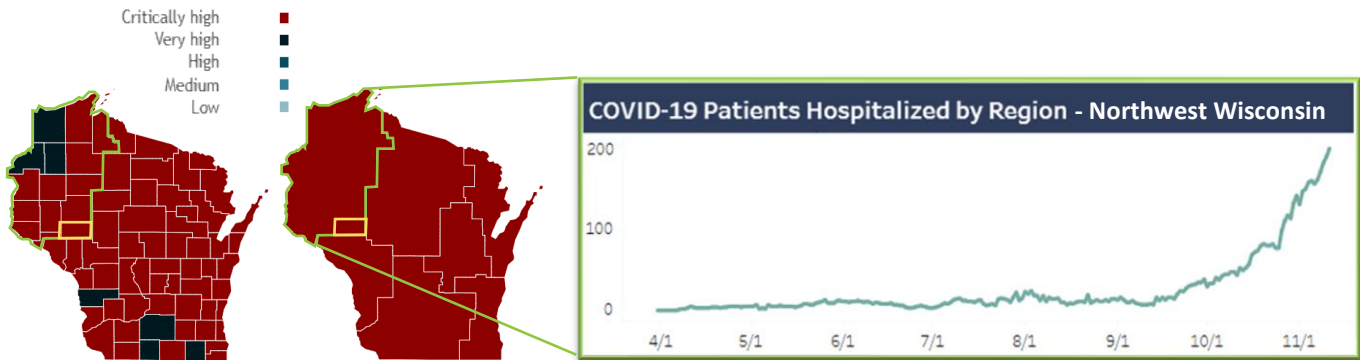
Eau Claire County Weekly Metrics Summary

(Unless otherwise noted, metrics were calculated using data reported by WI DHS during 14-days ending 11/10/2020 and compared to the 14-days ending on 11/03/2020)

● Good ■ Proceed with Caution ● Metric is Concerning — Status Not Classified ↓/↑ Metric Improved ↓/↑ Metric Declined

Metric Description	Value	Change	Metric Status
Percent Positive Tests (7-days)	19.7%	↑1.1	●
Change in New Cases (within last 14 days) 1,761 Total: 976 in final 7 days/785 in first 7 days	1,761 Total (976/785)	↑24.3%	●
Case Activity Level (State Calculated)	Critically High (Growing)	↑	---
New Outbreaks	24	↓5	●
Community Spread	32%	↓3	●
COVID-Like Illness Activity Level (State Measure)	High	No Change	---
Tests Conducted (# of tests/100k people/day)	636	↑22	---
COVID-19 Inpatients (NW Region as of 10/28)	197 (Growing)	↑41	---
COVID-19 Inpatients in ICU (NW Region as of 10/28)	18 (No significant Change)	↑10	---
Percent of Inpatient Hospital Beds Used (past 14 Days)	81%	↑4	■
Percent of Inpatient ICU Beds Used (past 14 Days)	93%	↑4	●
Case Contact Timeliness (in 24 hrs.)	52.3%	↓16.5	●
Contact Tracing (in 48 hrs.)	37.0%	↓4.6	●

COVID-19 Activity Level by County and Region and Northwest WI Hospitalization Data



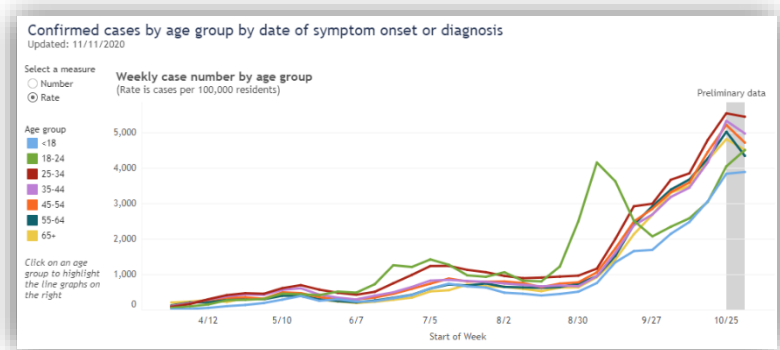
Source: Wisconsin Department of Health Services [COVID-19 Activity Page](#)

Data and Metric Narrative

The local data and metrics continue to worsen. Both the positivity rate over the past 7-days and the number of cases over the past 14-days again reached new all-time highs at 19.7% and 1,761 cases (rate of 125.8 per day). For additional context, the rate of cases seen over the past 14-days is now nearly 5 times greater than the very high threshold that the state has identified (25.75 cases per day as pro-rated for the county population). Additionally, the local rate of cases is 71% higher than the recently released threshold that Wisconsin has identified as critically high (73.6 cases per day as pro-rated for the county population). As stated previously, the continued goal is for the case rate to be closer to 10 cases per day, as rates exceeding that amount have resulted in a compromised ability to thoroughly interview cases and to speak with close contacts. For additional context, nearly 55% of the total cases that have been confirmed in Eau Claire County have occurred in the past 30 days. When considering Eau Claire and surrounding counties cumulatively, this percentage is even higher at 61%.

At the State and local level, cases continue to be more widely distributed, both in terms of age (see [graphic](#) below) and geographical distribution. In Eau Claire County, all but one of the census tracts in the county (Census Tract 12 in downtown Eau Claire) have had their highest weekly case rate within the past three weeks. All age groups and geographical areas continue to see increasing numbers of cases and higher percentage of tests with positive results.

As mentioned above, Eau Claire County is now classified as having “Critically High” COVID-19 activity, while the trajectory in activity jumped back to “Growing” again this week. This change is in alignment with the local case trajectory measure, which moved from “Yellow - Proceed with Caution” to “Red - Metric is Concerning” this week. The “Critically High” case burden was added this week by the State because it was determined that the previous classification did not accurately depict the severity of the situation. 65 of the 72 Wisconsin counties, including all surrounding counties are now classified as having “Critically High” activity with the other 7 counties having “Very High Activity.” Other neighboring counties with a “Growing” trajectory, including Clark, Chippewa, Pepin, and Trempealeau. The other 3 surrounding counties (Buffalo, Dunn, and Jackson) are listed as having “No significant Change” in trajectory. Additional information about COVID-19 activity by county and region can be viewed at the newly updated [DHS Activity Level webpage](#), including data illustrations that are also shown on the bottom of page 2 of this report.



Modest improvements were observed in several metrics, including the number of new outbreaks (24), the number of tests (636 tests per 100k people per day), and the percentage of cases attributed to community spread (32%). However, each of these metrics remains at concerning levels. In fact, only one metric is not classified as “Red – Metric is Concerning,” that being hospital bed use in the region over the past 14 days. Due to the 14-day reporting period, these data may not yet reflect the most recent communication from area hospitals that they are all concerned with volume of beds and staff. Regarding the case contact and contact tracing metrics, the Health Department continues to prioritize reaching and interviewing cases, relying on alternative strategies to reach close contacts. At the current rate of cases, very few contacts were being attempted to be reached by Health

Eau Claire City-County Health Department
COVID-19 Situation Report #65
Friday November 13, 2020

Department disease investigators. As a result, the contact tracing measure has very limited value beyond being a clear indicator that our core public health strategies are not possible given the unprecedented volume of cases. The Department is currently developing a simple metric that should assist in better depicting public health capacity. It is expected that this new measure will be incorporated in next week's metrics.

Statewide and locally, hospitalizations from COVID-19 continue to climb. As has been the case for several weeks, the number of hospitalized patients in Wisconsin seems to reach a new all-time high nearly every day and is now nearly five times greater than the peak number reached last spring. All regions have set their all-time high in COVID-19 patients in the past 30 days, with all but 1 region (Fox Valley) setting all-time highs in the days since November 10th. Notably, there was a 26.3% increase in COVID-19 hospitalizations and 55.6% increase in ICU inpatients in the region over the past week. Multiple Health Care facilities in the region continue to state that they are experiencing a critical shortage of staffing. These data and anecdotal evidence, including media statements from local facilities that 100% bed capacity has been reached, suggest that local and regional Health Care capacity is now at a critical level.

Like hospitalizations, the number of deaths continues to increase. At the state level, the average number of COVID-19 deaths occurring per day across the past 14-days was more than 40 deaths per day, which is more than 3 times the rate 3 weeks ago, and nearly 4 times the highest rate seen last spring. 40% of Wisconsin's total COVID-19 deaths have occurred in the past 30-days, while that percentage being 78% across the past 30-days locally (Eau Claire and 7 surrounding counties). Each week, these percentages only increase. In Eau Claire County, 65% of the counties COVID-19 deaths were reported in the 7 days from October 28th – November 10th.

The Health Department continues to implore the community to follow the measures that we know work to slow the spread of disease – keeping social circles small, staying home when sick, maintaining physical distance of 6 feet, washing hands frequently, and wearing cloth face coverings whenever in public or around people not from your household. This is now more important than it has ever been. It also remains critical that people who have tested positive or have been notified that they are close contact answer the phone from public health staff to talk through the requirement to isolate or quarantine. It is also critical that those that have tested positive and those that are close contacts go to our website to review new information there about what to do next. Isolation and quarantine are difficult but necessary. Slowing the spread of disease is critical for keeping businesses, schools, and all other shared priorities open and thriving.

Additional Metrics:	WI Activity Level by County/Region	EC County Metrics - Summary
	WI Hospital Capabilities	EC County Metrics - Detailed
	WI Facility-Level Investigations	EC County Exposures & Investigations

Eau Claire County COVID-19 Prevention and Control Community Expectations

The Health Department issued an updated Eau Claire County COVID-19 Prevention and Control Community Expectations document on 11/13/2020. The updated [Expectations](#) provide clear public health science-based actions that all of us need to take at an individual and organizational level to slow the spread of COVID-19. The revised Expectations communicate that it is safer right now to stay home as much as possible and keep close contacts to be only those in your immediate household/family. These Expectations are critically important mitigation strategies. The Health Department also provided information on an update to the process used to

follow up on complaints related to non-adherence with the Expectations. Staff will continue to receive complaints, follow up with entities and provide education, consultation, and technical assistance. In addition, a formal follow-up letter documenting the non-adherence to Expectations will be sent. The goal is to build a community expectation that all individuals and organizations are following the basic Expectations that will keep all of us safer. Additional information about the updated Expectations can be found [here](#).


[Additional Information:](#) [Current Expectations](#) [UWEC Dashboard](#)

Other Eau Claire County Incident Command Updates

**Remains unchanged since last report*

Numerous Testing Options Available in Eau Claire County

COVID-19 Testing Sites in Eau Claire County




Please get tested if:

- You have any symptoms of COVID-19
- You have had close contact (within 6 feet for a total of 15 minutes or more) with someone with confirmed COVID-19 (asked to quarantine)

Please stay home until you receive your test results.

COVID-19 Symptoms:

- Fever or chills
- Cough
- Shortness of breath
- Difficulty breathing
- Fatigue
- Muscle or body aches
- Sore throat
- Congestion or runny nose
- Nausea or vomiting
- Headache
- Diarrhea
- New loss of taste or smell

Testing Locations	SUN	MON	TUES	WED	THURS	FRI	SAT	Details
National Guard Community Site 6697 US Hwy 12 West Eau Claire, WI 54703		11am-7pm				11am-7pm	9am-5pm	Register on the day of your test here: https://register.wisconsin.gov/idconnect.wi.gov/ or register in person when you arrive or register by scanning:  Call (844) 342-6276 to schedule an appointment Call your primary care provider/clinic or (715) 838-5025 to be screened Make an appointment through myprevea.com
National Guard Community Site 616 W. Washington Ave Augusta, WI 54722				2-7pm				
Marshfield Clinic Health System 2310 Craig Rd Eau Claire, WI 54701	9am-1pm	9am-5pm	9am-5pm	9am-5pm	9am-5pm	9am-5pm	9am-1pm	
Mayo Clinic Health System 2712 Stein Blvd Eau Claire, WI 54701	Availability Varies	9am-4pm	9am-4pm	9am-4pm	9am-4pm	9am-4pm	8am-12pm	
Prevea Health 950 West Clairemont Ave Eau Claire, WI 54701	8am-12pm	8am-4pm	8am-4pm	8am-4pm	8am-4pm	8am-4pm	8am-12pm	

Additionally, the University of Wisconsin – Eau Claire recently announced a new community testing initiative being implemented through a partnership between the University of Wisconsin System and the U.S. Department of Health and Human Services. This initiative will bring approximately 15,000 antigen tests for **asymptomatic** testing

Eau Claire City-County Health Department
COVID-19 Situation Report #65
Friday November 13, 2020

to the University of Wisconsin's Eau Claire and Barron County campuses for faculty, staff, and students as well as providing a community testing site in Eau Claire for the general public. This community antigen testing site will operate at the Eau Claire Memorial High School parking lot in Eau Claire from 12:00 – 8:00 pm on Saturdays, Sundays, and Wednesdays through mid-December. This testing site is best suited for people over the age of 5 who **do not** currently have COVID-19 symptoms. This testing may be especially appropriate for people who attend, live, or work in a group setting (school, daycare, shelter, group home), interact with vulnerable populations, travel frequently, or have been in close contact with someone with COVID-19. The benefit of antigen testing is that you can get a rapid result, but in some situations, people may need to confirm with a different type of test. A flyer for the antigen testing site can be viewed [here](#). **Anyone experiencing symptoms of COVID-19 should not visit this site, and instead pursue a testing option from the table above.**

More details about these and other testing options are available at the [Symptoms and Testing page](#) of the Eau Claire COVID-19 Information Hub and the Wisconsin DHS [Community Testing Page](#).

New Executive Order Issued

On November 10th, Wisconsin Governor Tony Evers delivered a statewide [address](#) regarding the COVID-19 pandemic. During the address, Governor Evers announced [Executive Order #94](#), which outlined new measures to reduce the spread of COVID-19 in Wisconsin. This order, which was issued due to the continued increasing trajectory in COVID-19 cases, hospitalizations, and deaths, advises Wisconsin residents to stay home as much as possible, to practice additional precautions when leaving the home is necessary, and encourages businesses to take additional steps to protect workers, customers, and the surrounding community.

Court Developments Concerning Statewide Orders

The Wisconsin Supreme Court is set to hear a case against the statewide face covering mandate or [Emergency Order #1](#) on Monday November 16th, which is currently in place statewide through November 21st. This case is centered around the argument that Wisconsin Governor Tony Evers lacks the authority to issue successive Emergency Orders for the same Public Health Emergency. On October 12th, a Polk County Circuit Judge ruled that Wisconsin Governor Tony Evers retained this authority, there upholding the Governor's ability to impose the face covering mandate.

Additional developments regarding this and other applicable orders will be provided as they are available.

Deer Hunting Season Guidance

For many people in Wisconsin, the Gun Deer season traditionally involves activities that may present an elevated risk for COVID-19 spread, particularly among those that participate in a deer camp. The best practice would be to avoid traveling outside of your area of residence to hunt this season or to make alternate lodging arrangements to avoid gathering with people from outside of your immediate household if travel is necessary. It is important to note that if you are experiencing any COVID-19 symptoms, please stay home. For those that may be feeling well and choose to partake in hunting camp, there are steps can be taken to reduce risk for spread. Such steps include maintaining physical distance, wearing a cloth face covering, regularly disinfecting surfaces, frequently washing hands, maintaining separate sleeping quarters, restricting the use and capacity of common spaces, discontinuing social activities between households, staying outside as much as possible, and avoiding riding with people from outside of your home. Self-quarantining before and after attending camp is also a good practice to reduce the risk

Eau Claire City-County Health Department
COVID-19 Situation Report #65
Friday November 13, 2020

of bring COVID-19 into camp and into your community following camp. The Health Department wishes all hunters have a safe and successful deer season!

Thanksgiving Guidance Released

The Health Department recently released new guidance for the upcoming Thanksgiving holiday. Consistent with current local and statewide guidance, the best practice this year is to participate in these activities in a manner that does not involve gathering with persons outside of your household. Additional guidance for how to more safely observe and partake in Thanksgiving and other events during the pandemic can be viewed on the Community Events, Gatherings, and Sports [page](#) of the Eau Claire County COVID-19 Information Hub and similar pages developed by [CDC](#) and [WI DHS](#).

COVID-19 Potential Community Exposures and Public Health Investigations

As a reminder, Eau Claire City-County Health Department alerts the public of [potential COVID-19 exposure](#) at local establishments whenever a positive individual is known to have visited a location and have been in prolonged close contact with persons that they are unable to identify. Any future public notifications will be posted on the above web page along with a weekly summary of the active and total Public Health Investigations in Eau Claire County related to COVID-19.

As a reminder, due to the extreme volume of cases, our disease investigators remain limited in their ability to thoroughly interview cases and identify and contact their close contacts. As a result of the modified public health practices, potential community exposures are less likely to be revealed during case follow-up. At the current rate of community spread, anyone who is engaging in activities requiring close contact with other individuals that they do not know should assume that these activities come with an elevated risk of exposure. We strongly encourage community members to limit close contact with non-household members.

***On-Line Resources for Cases and Close Contacts**

The Health Department disease investigators are working diligently as they attempt to make contact with new cases and close contacts (when possible) that are determined to be at elevated risk for severe illness or present an increased potential for a concerning outbreak (schools, congregate living setting, etc.). Unfortunately, the current volume of cases makes even this level of case follow-up incredibly difficult. As a result, disease investigators have been forced to prioritize investigation work even further, meaning close contacts and even some cases may not be contacted by phone by a disease investigator. If you are notified by a testing site/provider that you have tested positive for COVID-19 or have been notified that you are a close contact to a case and have not yet heard from the Health Department, please visit the Eau Claire County COVID-19 Information Hub to understand the public health expectations related to isolation and quarantine. There are now 2 links on the page entitled "*I Tested Positive*" and "*I am a Close Contact*," which walk through these expectations. If there are further questions, the Department encourages cases and close contacts to call the COVID-19 Call Center at (715) 831-7425.

***COVID-19 Call Center**

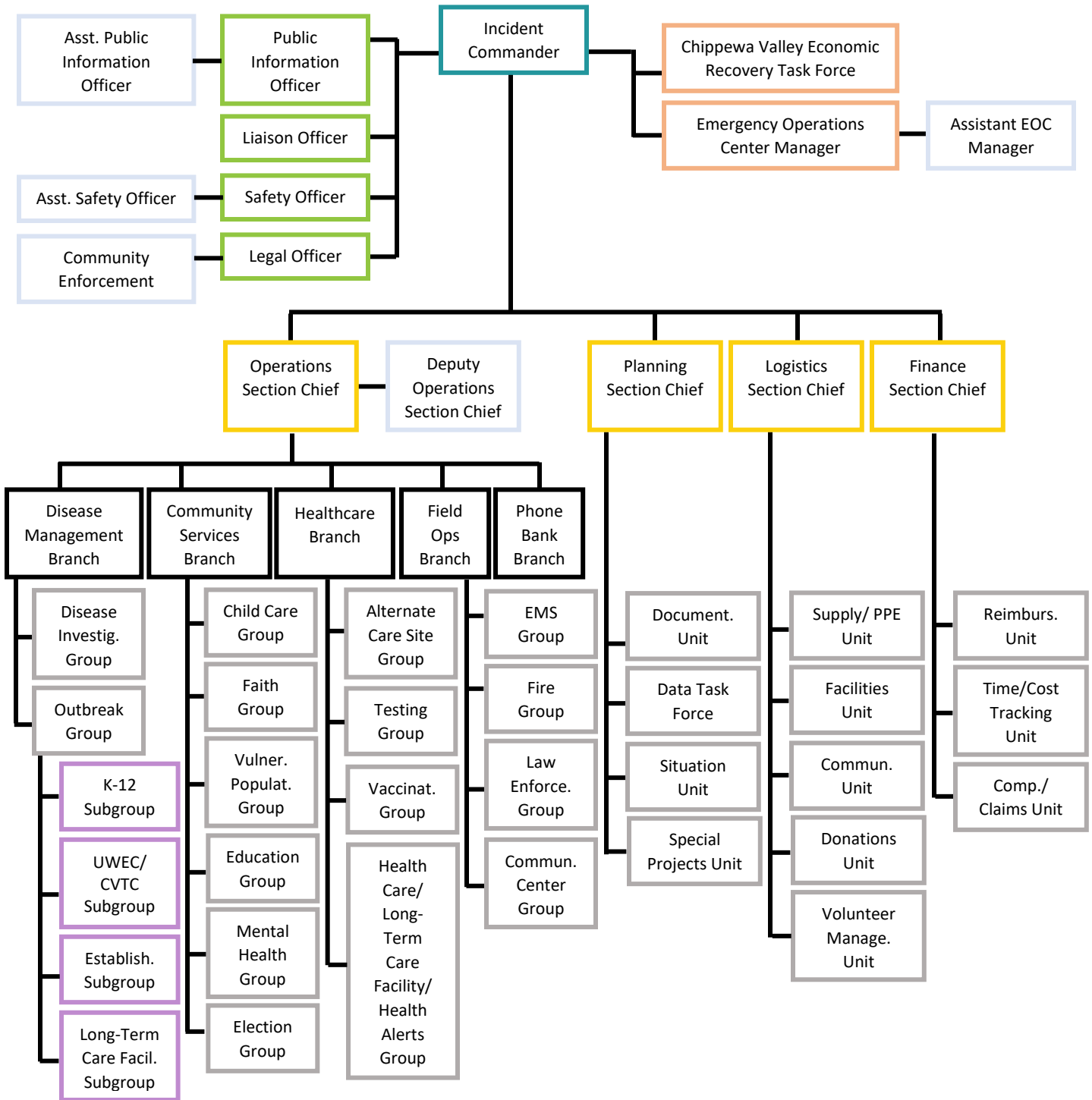
The number for the COVID call center is (715) 831-7425 with hours 8:30am – 4:30pm Monday through Friday. Callers may leave a message and a return phone call will occur within the same business day.

**Eau Claire City-County Health Department
 COVID-19 Situation Report #65
 Friday November 13, 2020**

***Current Duration of Operational Period**

1 week (7 Days) - Friday 9:00 am – Friday 8:59 am

***Current Organizational Structure**



***Current Incident Objectives**

Objective #1: Contain and mitigate community spread of COVID-19

Objective #2: Coordinate strategies to facilitate a safe and effective social and economic reopening and recovery

Objective #3: Provide relevant, accurate information and resources to the general public, specialty populations, and key partners

Objective #4: Facilitate and support the Development and implementation of community-wide health care surge and response plans and actions in coordination with local health care providers and state and federal agencies

Objective #5: Sustain and adapt operation of the Emergency Operations Center and incident command elements

***Reminder to Sign up for Situation Report e-notifications:**

If you would like to receive direct notification whenever new reports are added, please sign up for an automated email notification at: <https://www.eauclairewi.gov/our-city/sign-up-for-e-notifications>. To successfully register for these updates, you must provide your name and email address and subscribe to "COVID-19 Situation Report."

Other Pertinent Links and Resources

** Remains unchanged since last report*

- ❖ [DPI School Nurse Update](#) (11/12/2020)
 - This information is provided for your visibility on messaging being shared by DPI.
 - DPI's [Interim COVID-19 Infection Control and Mitigation Measures for Schools](#) was updated 11/6/2020 to include a clarifying statement on when a face covering is able to be removed by an individual giving an educational, artistic, cultural, musical, or theatrical presentation for an audience. The guidance document also includes statements discouraging playing wind instruments indoors and the use of bell covers, in line with DHS recommendations.
 - DPI School Nurse Updates can be accessed [here](#)
- ❖ [Gov. Evers, DATCP Announce Additional \\$10 Million for Food Security Initiative](#)
- ❖ CDC Scientific Brief: [Community Use of Cloth Masks to Control the Spread of SARS-CoV-2](#). This scientific brief states that mask wearing not only helps protect others, but also helps protect the mask wearer as it reduces inhalation of virus-laden droplets by the wearer.
 - [Q&A: Cloth face coverings](#)
- ❖ Updated Holiday Guidelines from CDC:
 - [Celebrating Thanksgiving](#)
 - [Holiday Celebrations and Small Gatherings](#)
- ❖ Holiday Resources from DHS:
 - [Celebrating Holidays Safely](#)
 - [DHS Holiday Guidance](#)
- ❖ [Gov. Evers Releases Statement on District Court of Appeals Decision on Public Gatherings Limits](#), Encourages Wisconsinites to Stay Home

**Eau Claire City-County Health Department
COVID-19 Situation Report #65
Friday November 13, 2020**

❖ **New and Updated from CDC:**

- **MMWR Early Release:** [Declines in SARS-CoV-2 Transmission, Hospitalizations, and Mortality After Implementation of Mitigation Measures--Delaware, March-June, 2020](#)
- [COVID-19 Science Update, November 6, 2020](#)
- **MMWR:** [A SARS-CoV-2 Outbreak Illustrating the Challenges in Limiting the Spread of the Virus--Hopi Tribe, May-June 2020](#)
- **Notes from the Field:** [Development of an Enhanced Community-Focused COVID-19 Surveillance Program--Hopi Tribe, June-July 2020](#)
- **MMWR:** [Telework Before Illness Onset Among Symptomatic Adults Aged ≥18 Years With and Without COVID-19 in 11 Outpatient Health Care Facilities--United States, July 2020](#)
- **MMWR:** [Birth and Infant Outcomes Following Laboratory-Confirmed SARS-CoV-2 Infection in Pregnancy--SET-NET, 16 Jurisdictions, March 29-October 14, 2020](#)

❖ **[ASTHO COVID-19 Vaccine Approval Process Overview](#)**

Additional Links and Resources:

[*EC County COVID-19 Information Hub*](#)

[*Eau Claire Chamber of Commerce COVID-19 Website*](#)

[*Wisconsin Economic Development Corporation \(WEDC\)*](#)

[*Personal Protective Equipment \(PPE\) Guidance*](#)

[*Wisconsin Department of Health Service \(WI DHS\) COVID-19 website*](#)

[*Health Care Providers webpage*](#)

[*Centers for Disease Control and Prevention \(CDC\) COVID-19 website*](#)

[*CDC Health Alert Network \(HAN\)*](#)

Next Scheduled Situation Report Date: Friday November 20th, 2020